

**SANDRA BENHAMOU**



**COFFEE TABLE**

**LUNA**

# SANDRA BENHAMOU



Luna coffee table

Indoor / outdoor

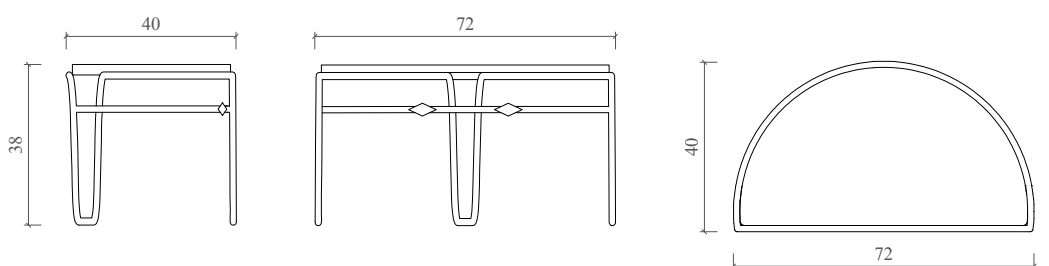
## Materials

Glazed lava stone  
Wrought iron

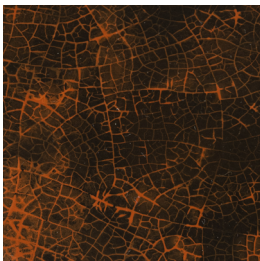
## Dimensions

L 72 x W 40 x H 38 cm

L 28.3 x W 15.7 x H 15 inches



# SANDRA BENHAMOU



## Glazed lava stone

Glossy finish



## Wrought iron

Black patina with satin finish

## Care instructions

---

### Marble and stone

#### Clean Gently:

Use a soft cloth or sponge dampened with water or a pH-neutral cleaner to clean marble and stone surfaces. Avoid acidic cleaners (such as vinegar or lemon juice), as they can etch the surface.

#### Protect from Spills:

Immediately blot spills (especially of acidic substances like wine, coffee, or citrus juices) with a soft cloth to prevent staining or etching (without rubbing).

### Metal

#### Prevent Tarnishing:

For metals like brass or copper, use a gentle metal cleaner to prevent tarnishing. Regular maintenance can help keep the finish bright and free from discoloration.

#### Avoid Corrosive Elements:

Keep metal surfaces away from moisture, salt, and acidic substances. Use coasters, placemats, and felt pads to prevent direct contact with the metal.