

SANDRA BENHAMOU



SANDRA BENHAMOU

Velvet selection

Pierre Frey - Teddy Mohair

65% Mohair - 35% Cotton / Martindale 85000



018 - Orage



006 - Cafe



003 - Miel



002 - Creme



025 - Nacre



028 - Herisson



026 - Sable



019 - Elephant



032 - Graminees



027 - Choco



024 - Ecorce

Care instructions

Vacuum Regularly:

Use a vacuum with a soft brush attachment to gently remove dust and debris from fabric surfaces.

Spot Clean:

Blot spills immediately with a clean, dry cloth. For deeper stains, use a fabric cleaner designed for upholstery, following the manufacturer's instructions.

Brand specific instruction:

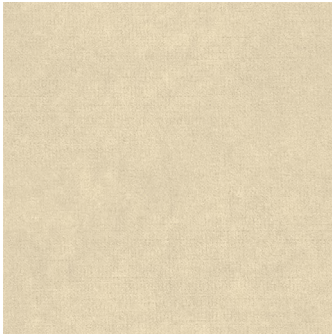
Please follow the care and cleaning instructions provided by each brand, as these guidelines may vary between different manufacturers.

SANDRA BENHAMOU

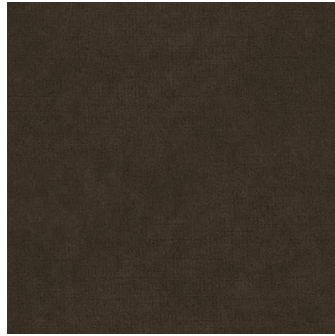
Velvet selection

Dedar - Vladimiro

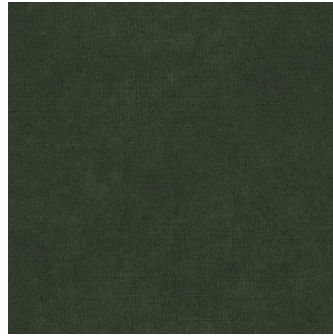
62% Mohair - 38% Cotton / Martindale 80000



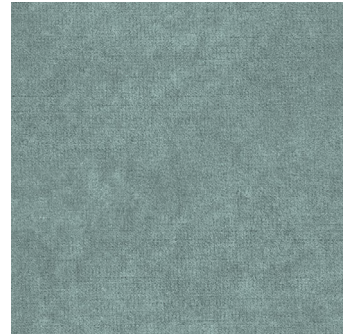
006 - Orso polare



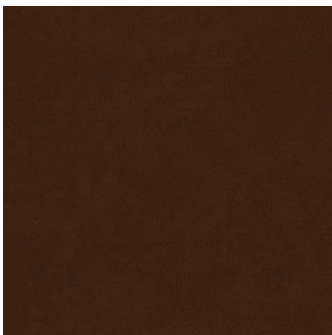
009 - Taupe



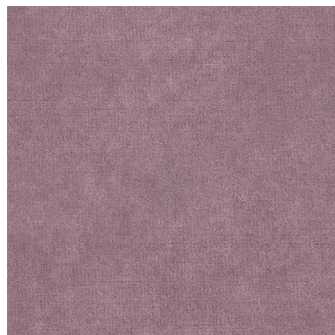
010 - Militare



023 - Acqua



024 - Tabacco



019 - Lilla

Care instructions

Vacuum Regularly:

Use a vacuum with a soft brush attachment to gently remove dust and debris from fabric surfaces.

Spot Clean:

Blot spills immediately with a clean, dry cloth. For deeper stains, use a fabric cleaner designed for upholstery, following the manufacturer's instructions.

Brand specific instruction:

Please follow the care and cleaning instructions provided by each brand, as these guidelines may vary between different manufacturers.

SANDRA BENHAMOU

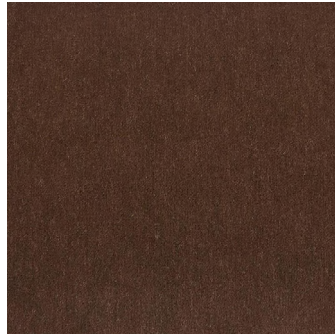
Velvet selection

Loro Piana - Ballroom

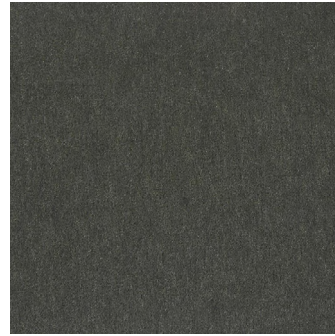
62% Mohair - 38% Cotton / Martindale 40000



001 - Pietra



004 - Mustang



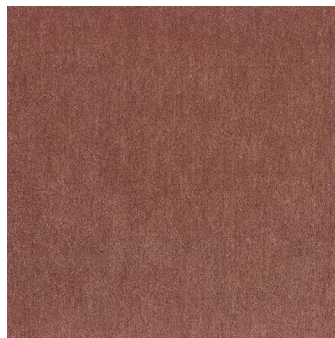
010 - Forest



011 - Ginger



012 - Green tea



016 - Desert rose

Care instructions

Vacuum Regularly:

Use a vacuum with a soft brush attachment to gently remove dust and debris from fabric surfaces.

Spot Clean:

Blot spills immediately with a clean, dry cloth. For deeper stains, use a fabric cleaner designed for upholstery, following the manufacturer's instructions.

Brand specific instruction:

Please follow the care and cleaning instructions provided by each brand, as these guidelines may vary between different manufacturers.

SANDRA BENHAMOU

Velvet selection

Métaphores / Verel de Belval - Monsieur le Prince

68% Wool - 21% Viscose - 11% Cotton / Martindale 20000

Not recommended for seating use



001 - Ivoire



004 - Mastic



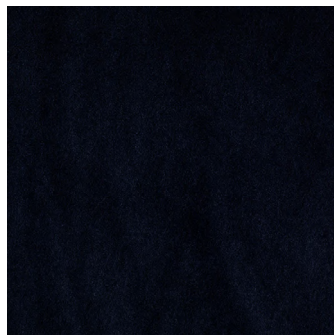
006 - Citron



008 - Daim



011 - Kaki



015 - Marine

Métaphores / Verel de Belval - Montaigne

62% Mohair - 29% Cotton - 9% Polyester / Martindale 100000



010 - Absynthe



019 - Beige

Care instructions

Vacuum Regularly:

Use a vacuum with a soft brush attachment to gently remove dust and debris from fabric surfaces.

Spot Clean:

Blot spills immediately with a clean, dry cloth. For deeper stains, use a fabric cleaner designed for upholstery, following the manufacturer's instructions.

Brand specific instruction:

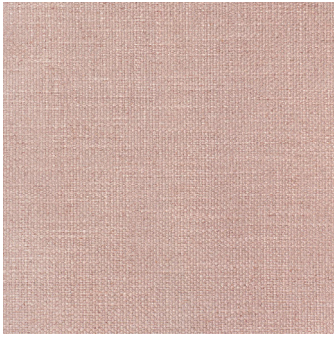
Please follow the care and cleaning instructions provided by each brand, as these guidelines may vary between different manufacturers.

SANDRA BENHAMOU

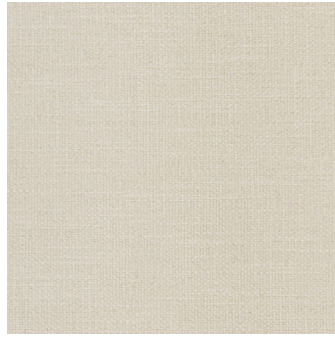
Linen selection

Dedar - Flair

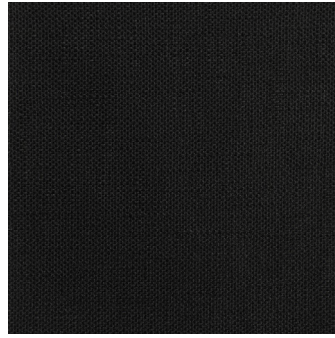
70% Viscose - 30% Linen / Martindale 30000



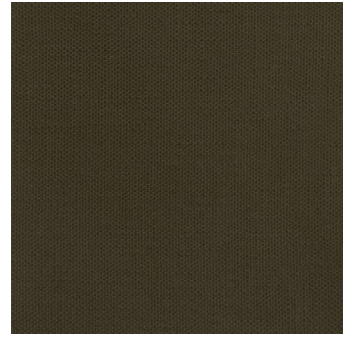
103 - Bois de rose



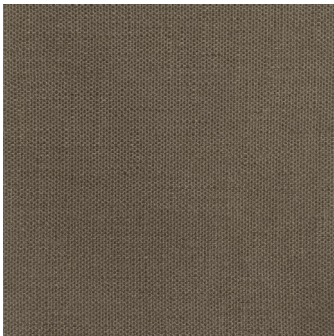
111 - Bianco



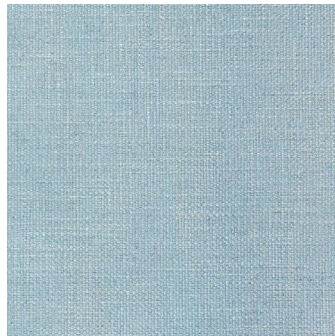
121 - Nero



130 - Lichene



150 - Tortora



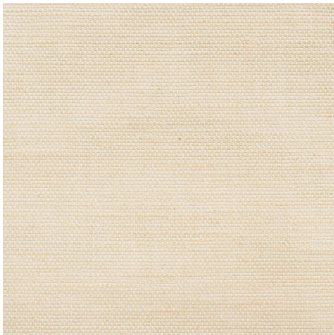
143 - Cielo



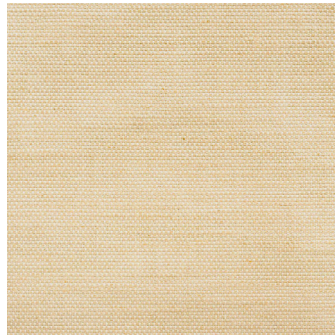
171 - Latte

Dedar - Fifty Fifty

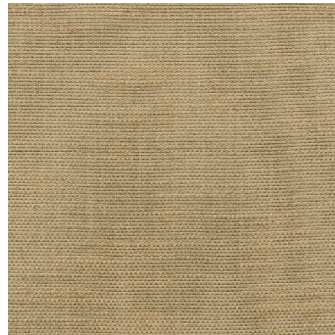
76% Viscose - 24% Linen / Martindale 30000



015 - Champagne



016 - Burro



049 - Beige

Care instructions

Vacuum Regularly:
Use a vacuum with a soft brush attachment to gently remove dust and debris from fabric surfaces.

Spot Clean:
Blot spills immediately with a clean, dry cloth. For deeper stains, use a fabric cleaner designed for upholstery, following the manufacturer's instructions.

Brand specific instruction:
Please follow the care and cleaning instructions provided by each brand, as these guidelines may vary between different manufacturers.

SANDRA BENHAMOU

Linen selection

Loro Piana - Clifden

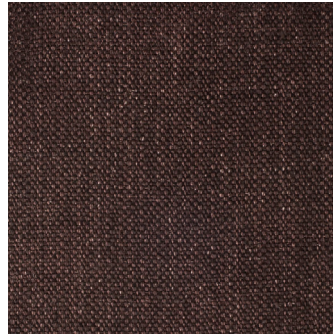
100% Linen / Martindale 20000
Not recommended for seating use



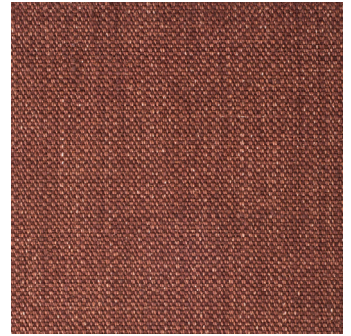
003 - Kasha



005 - Palomino



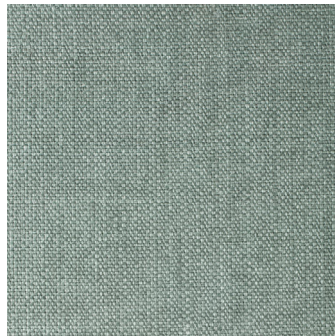
007 - Morello



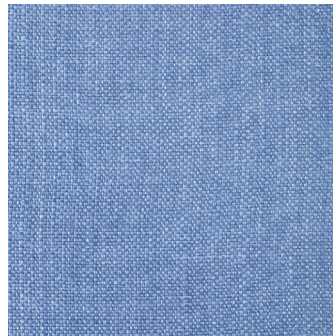
008 - Copper



013 - Tundra



014 - Malachite



015 - Fiordaliso

Care instructions

Vacuum Regularly:

Use a vacuum with a soft brush attachment to gently remove dust and debris from fabric surfaces.

Spot Clean:

Blot spills immediately with a clean, dry cloth. For deeper stains, use a fabric cleaner designed for upholstery, following the manufacturer's instructions.

Brand specific instruction:

Please follow the care and cleaning instructions provided by each brand, as these guidelines may vary between different manufacturers.

SANDRA BENHAMOU

Linen selection

Métaphores - Cyclades

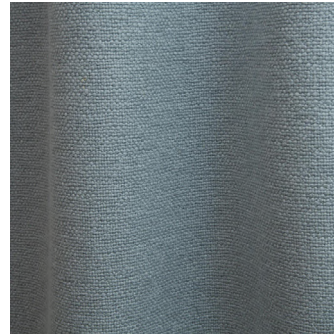
90% Linen - 10% Polyamide / Martindale 30000



003 - Curry



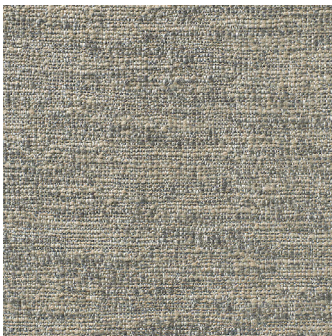
004 - Poudre



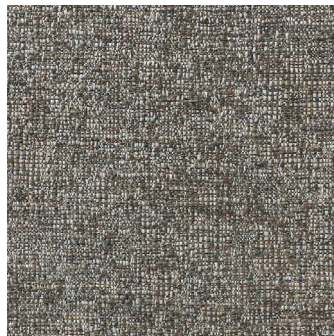
008 - Source

Métaphores - Deauville

76% Linen - 22% Wool - 2% Polyester / Martindale 30000



003 - Souris



008 - Orage



013 - Galet

Métaphores - Zanzibar

73% Linen - 22% Wool - 5% Polyester / Martindale 25000



008 - Gres

Care instructions

Vacuum Regularly:
Use a vacuum with a soft brush attachment to gently remove dust and debris from fabric surfaces.

Spot Clean:
Blot spills immediately with a clean, dry cloth. For deeper stains, use a fabric cleaner designed for upholstery, following the manufacturer's instructions.

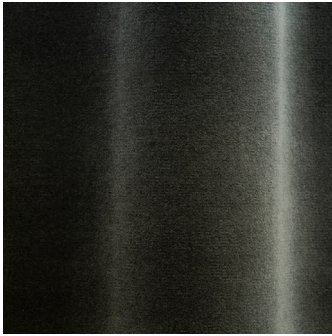
Brand specific instruction:
Please follow the care and cleaning instructions provided by each brand, as these guidelines may vary between different manufacturers.

SANDRA BENHAMOU

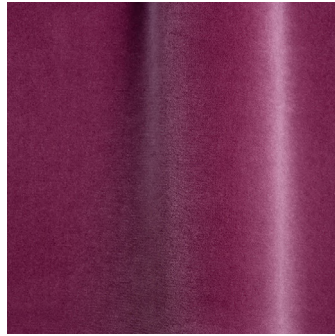
Cotton selection

Métaphores - St Germain

100% Cotton / Martindale 115000



002 - Anthracite



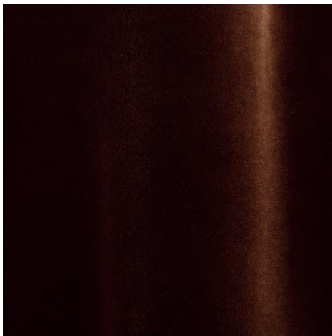
006 - Prune



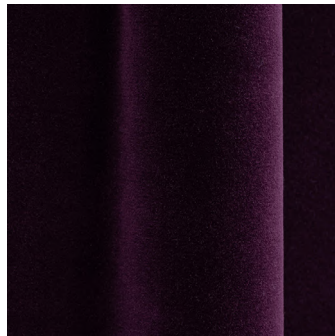
011 - Pistil



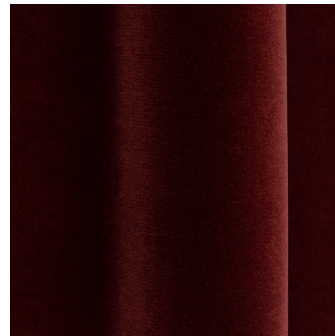
023 - Mastic



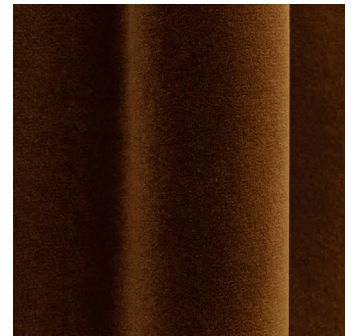
037 - Fondant



039 - Aubergine



040 - Acajou



047 - Havane

Métaphores - Lounge

45% Organic Cotton - 30% Viscose - 22% Acrylic - 3% Polyamide / Martindale 50000



001 - Naturel

Care instructions

Vacuum Regularly:
Use a vacuum with a soft brush attachment to gently remove dust and debris from fabric surfaces.

Spot Clean:
Blot spills immediately with a clean, dry cloth. For deeper stains, use a fabric cleaner designed for upholstery, following the manufacturer's instructions.

Brand specific instruction:
Please follow the care and cleaning instructions provided by each brand, as these guidelines may vary between different manufacturers.

SANDRA BENHAMOU

Pattern selection

Zak and Fox - Sycomorus

60% Wool - 40% Cotton / Martindale 8000
Not recommended for seating use



01



02



03

Zak and Fox - Brassica

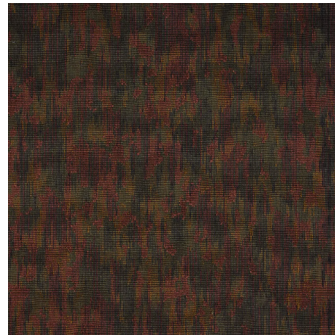
100% Cotton / Martindale 45000



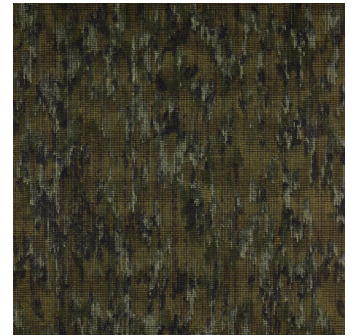
01



02



03



04



05

Care instructions

Vacuum Regularly:
Use a vacuum with a soft brush attachment to gently remove dust and debris from fabric surfaces.

Spot Clean:
Blot spills immediately with a clean, dry cloth. For deeper stains, use a fabric cleaner designed for upholstery, following the manufacturer's instructions.

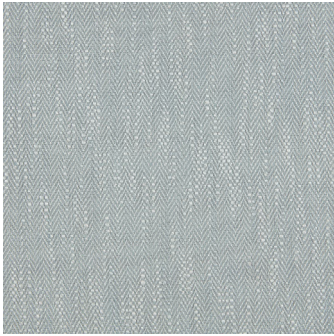
Brand specific instruction:
Please follow the care and cleaning instructions provided by each brand, as these guidelines may vary between different manufacturers.

SANDRA BENHAMOU

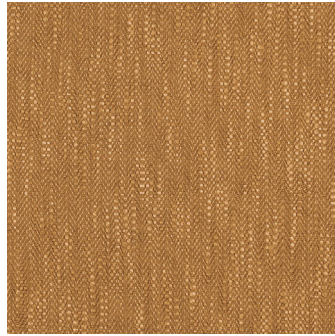
Pattern selection

Zak and Fox - Sahara

55% Jute - 45% Cotton / Martindale 16000
Not recommended for seating use



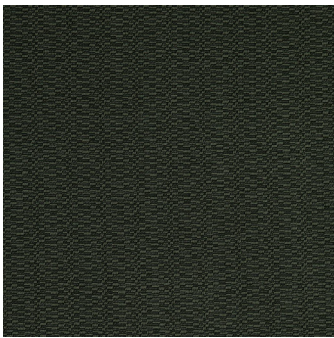
01



02

Zak and Fox - Sirena

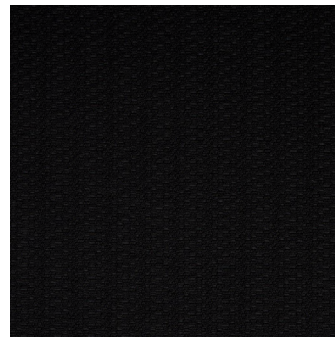
50% Cotton - 32% Wool - 18% Polyester / Martindale 21000



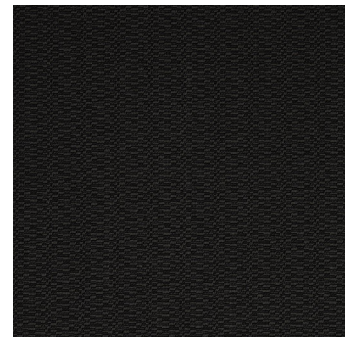
03



04



05



06



07

Care instructions

Vacuum Regularly:
Use a vacuum with a soft brush attachment to gently remove dust and debris from fabric surfaces.

Spot Clean:
Blot spills immediately with a clean, dry cloth. For deeper stains, use a fabric cleaner designed for upholstery, following the manufacturer's instructions.

Brand specific instruction:
Please follow the care and cleaning instructions provided by each brand, as these guidelines may vary between different manufacturers.

SANDRA BENHAMOU

Pattern selection

Jim Thompson - Cheetah

66% Silk - 23% Polyester - 11% Cotton / Martindale 10000

Not recommended for seating use



001 - Silver grey



002 - Amber

Jim Thompson - Taika

50% Rayon - 27% Cotton - 23% Polyester / Martindale 105000



003 - Tiger eye

Jennifer Shorto - Electric cheetah

53% Viscose - 41% Cotton - 6% Flax / Martindale 10000

Not recommended for seating use



Electric cheetah

Care instructions

Vacuum Regularly:

Use a vacuum with a soft brush attachment to gently remove dust and debris from fabric surfaces.

Spot Clean:

Blot spills immediately with a clean, dry cloth. For deeper stains, use a fabric cleaner designed for upholstery, following the manufacturer's instructions.

Brand specific instruction:

Please follow the care and cleaning instructions provided by each brand, as these guidelines may vary between different manufacturers.

SANDRA BENHAMOU

Pattern selection

Métaphores - Ria

98% Cotton - 2% Viscose / Martindale 100000



001 - Craie



005 - Marais

Métaphores / Verel de Belval - Tuileries

71% Linen - 29% Polyester / Martindale 0

Not recommended for seating use



003 - Jaune

Care instructions

Vacuum Regularly:

Use a vacuum with a soft brush attachment to gently remove dust and debris from fabric surfaces.

Spot Clean:

Blot spills immediately with a clean, dry cloth. For deeper stains, use a fabric cleaner designed for upholstery, following the manufacturer's instructions.

Brand specific instruction:

Please follow the care and cleaning instructions provided by each brand, as these guidelines may vary between different manufacturers.

SANDRA BENHAMOU

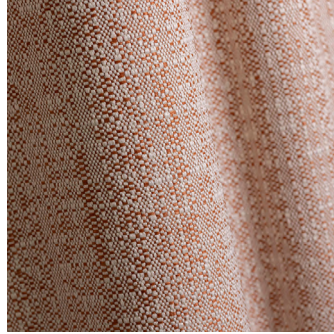
Exterior selection

Métaphores - Patio

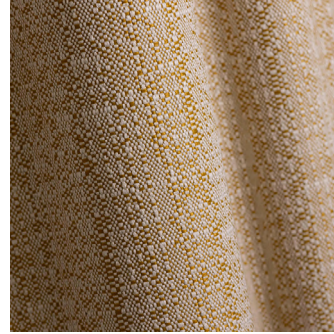
100% Polypropylene / Martindale 25000



003 - Lin



005 - Poterie



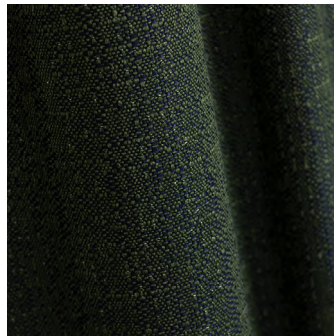
009 - Seigle



013 - Nuage



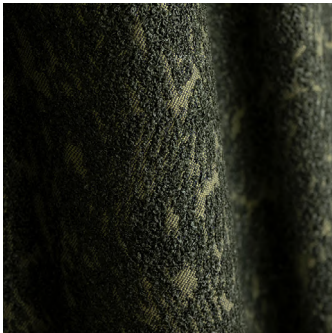
014 - Ardoise



016 - Cedre

Métaphores - Canopee

100% Polypropylene / Martindale 32000



003 - Mousse

Care instructions

Vacuum Regularly:
Use a vacuum with a soft brush attachment to gently remove dust and debris from fabric surfaces.

Spot Clean:
Blot spills immediately with a clean, dry cloth. For deeper stains, use a fabric cleaner designed for upholstery, following the manufacturer's instructions.

Brand specific instruction:
Please follow the care and cleaning instructions provided by each brand, as these guidelines may vary between different manufacturers.