

SANDRA BENHAMOU



SANDRA BENHAMOU

Velvet selection

Pierre Frey - Teddy Mohair

65% Mohair - 35% Cotton / Martindale 85000



018 - Orage



006 - Cafe



003 - Miel



002 - Creme



025 - Nacre



028 - Herisson



026 - Sable



019 - Elephant



032 - Graminees



027 - Choco



024 - Ecorce

Care instructions

Vacuum Regularly:

Use a vacuum with a soft brush attachment to gently remove dust and debris from fabric surfaces.

Spot Clean:

Blot spills immediately with a clean, dry cloth. For deeper stains, use a fabric cleaner designed for upholstery, following the manufacturer's instructions.

Brand specific instruction:

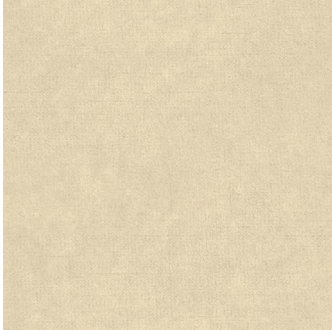
Please follow the care and cleaning instructions provided by each brand, as these guidelines may vary between different manufacturers.

SANDRA BENHAMOU

Velvet selection

Dedar - Vladimiro

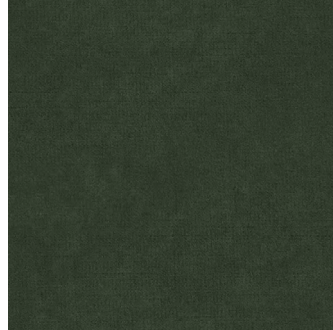
62% Mohair - 38% Cotton / Martindale 80000



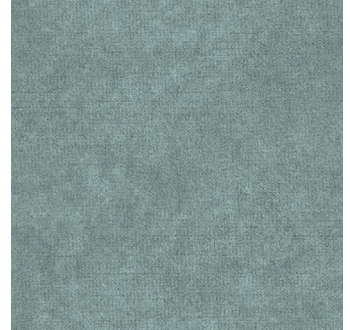
006 - Orso polare



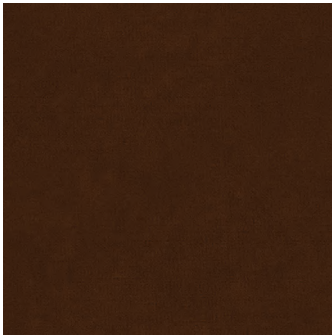
009 - Taupe



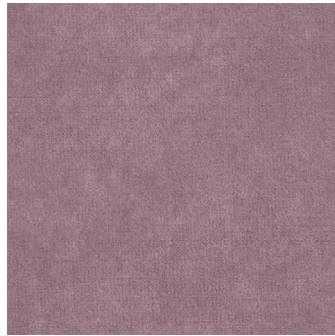
010 - Militare



023 - Acqua



024 - Tabacco



019 - Lilla

Care instructions

Vacuum Regularly:

Use a vacuum with a soft brush attachment to gently remove dust and debris from fabric surfaces.

Spot Clean:

Blot spills immediately with a clean, dry cloth. For deeper stains, use a fabric cleaner designed for upholstery, following the manufacturer's instructions.

Brand specific instruction:

Please follow the care and cleaning instructions provided by each brand, as these guidelines may vary between different manufacturers.

SANDRA BENHAMOU

Velvet selection

Loro Piana - Ballroom

62% Mohair - 38% Cotton / Martindale 40000



001 - Pietra



004 - Mustang



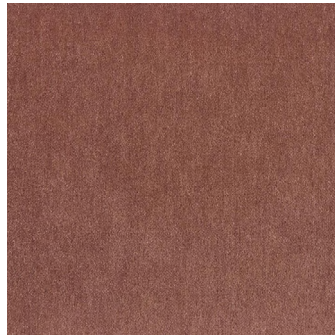
010 - Forest



011 - Ginger



012 - Green tea



016 - Desert rose

Care instructions

Vacuum Regularly:

Use a vacuum with a soft brush attachment to gently remove dust and debris from fabric surfaces.

Spot Clean:

Blot spills immediately with a clean, dry cloth. For deeper stains, use a fabric cleaner designed for upholstery, following the manufacturer's instructions.

Brand specific instruction:

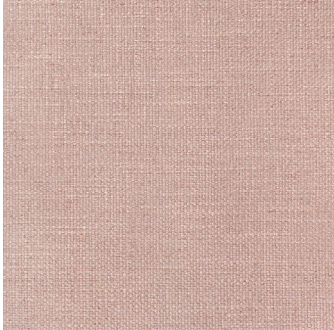
Please follow the care and cleaning instructions provided by each brand, as these guidelines may vary between different manufacturers.

SANDRA BENHAMOU

Linen selection

Dedar - Flair

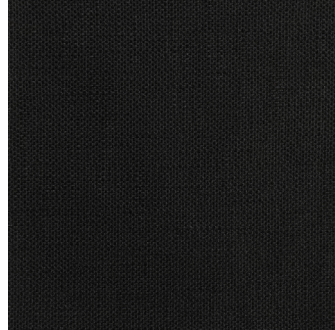
70% Viscose - 30% Linen / Martindale 30000



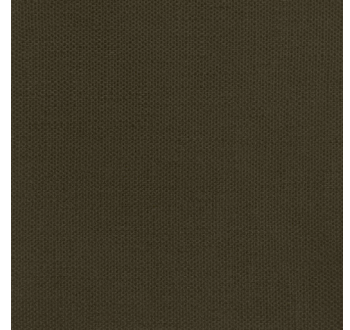
103 - Bois de rose



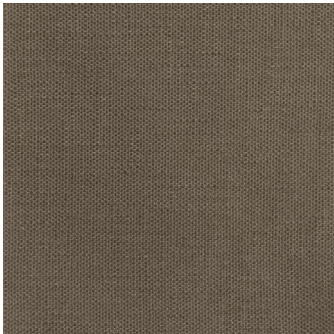
111 - Bianco



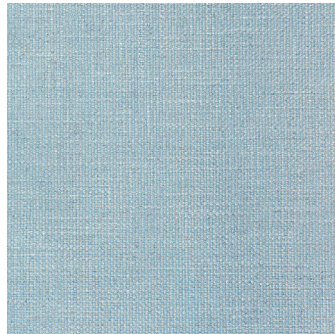
121 - Nero



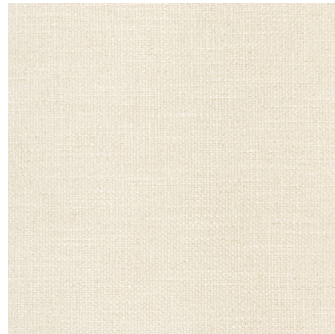
130 - Lichene



150 - Tortora



143 - Cielo



171 - Latte

Care instructions

Vacuum Regularly:

Use a vacuum with a soft brush attachment to gently remove dust and debris from fabric surfaces.

Spot Clean:

Blot spills immediately with a clean, dry cloth. For deeper stains, use a fabric cleaner designed for upholstery, following the manufacturer's instructions.

Brand specific instruction:

Please follow the care and cleaning instructions provided by each brand, as these guidelines may vary between different manufacturers.

SANDRA BENHAMOU

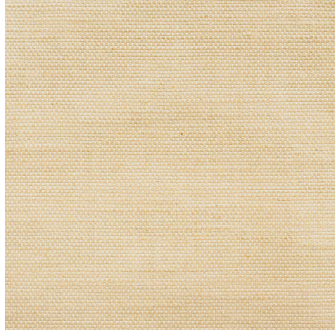
Linen selection

Dedar - Fifty Fifty

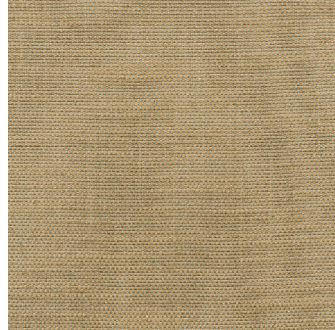
76% Viscose - 24% Linen / Martindale 30000



015 - Champagne



016 - Burro



049 - Beige

Care instructions

Vacuum Regularly:

Use a vacuum with a soft brush attachment to gently remove dust and debris from fabric surfaces.

Spot Clean:

Blot spills immediately with a clean, dry cloth. For deeper stains, use a fabric cleaner designed for upholstery, following the manufacturer's instructions.

Brand specific instruction:

Please follow the care and cleaning instructions provided by each brand, as these guidelines may vary between different manufacturers.

SANDRA BENHAMOU

Linen selection

Loro Piana - Clifden

100% Linen / Martindale 20000



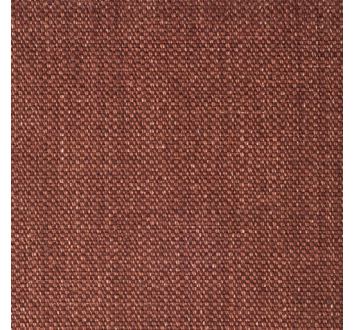
003 - Kasha



005 - Palomino



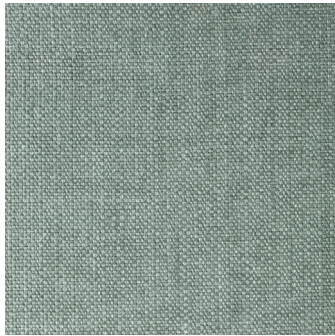
007 - Morello



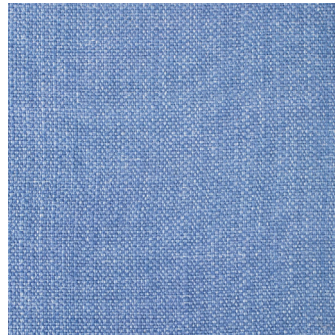
008 - Copper



013 - Tundra



014 - Malachite



015 - Fiordaliso

Care instructions

Vacuum Regularly:

Use a vacuum with a soft brush attachment to gently remove dust and debris from fabric surfaces.

Spot Clean:

Blot spills immediately with a clean, dry cloth. For deeper stains, use a fabric cleaner designed for upholstery, following the manufacturer's instructions.

Brand specific instruction:

Please follow the care and cleaning instructions provided by each brand, as these guidelines may vary between different manufacturers.

SANDRA BENHAMOU

Pattern selection

Zak and Fox - Sycomorus

60% Wool - 40% Cotton / Martindale 8000



01

Care instructions

Vacuum Regularly:
Use a vacuum with a soft brush attachment to gently remove dust and debris from fabric surfaces.

Spot Clean:
Blot spills immediately with a clean, dry cloth. For deeper stains, use a fabric cleaner designed for upholstery, following the manufacturer's instructions.

Brand specific instruction:
Please follow the care and cleaning instructions provided by each brand, as these guidelines may vary between different manufacturers.

SANDRA BENHAMOU

Pattern selection

Jim Thompson - Cheetah

66% Silk - 23% Polyester - 11% Cotton / Martindale 10000



001 - Silver grey



002 - Amber

Care instructions

Vacuum Regularly:

Use a vacuum with a soft brush attachment to gently remove dust and debris from fabric surfaces.

Spot Clean:

Blot spills immediately with a clean, dry cloth. For deeper stains, use a fabric cleaner designed for upholstery, following the manufacturer's instructions.

Brand specific instruction:

Please follow the care and cleaning instructions provided by each brand, as these guidelines may vary between different manufacturers.

SANDRA BENHAMOU

Pattern selection

Jim Thompson - Taika

50% Rayon - 27% Cotton - 23% Polyester / Martindale 105000



003 - Tiger eye

Care instructions

Vacuum Regularly:

Use a vacuum with a soft brush attachment to gently remove dust and debris from fabric surfaces.

Spot Clean:

Blot spills immediately with a clean, dry cloth. For deeper stains, use a fabric cleaner designed for upholstery, following the manufacturer's instructions.

Brand specific instruction:

Please follow the care and cleaning instructions provided by each brand, as these guidelines may vary between different manufacturers.

SANDRA BENHAMOU

Pattern selection

Jennifer Shorto - Electric cheetah

53% Viscose - 41% Cotton - 6% Flax / Martindale 10000



Electric cheetah

Care instructions

Vacuum Regularly:

Use a vacuum with a soft brush attachment to gently remove dust and debris from fabric surfaces.

Spot Clean:

Blot spills immediately with a clean, dry cloth. For deeper stains, use a fabric cleaner designed for upholstery, following the manufacturer's instructions.

Brand specific instruction:

Please follow the care and cleaning instructions provided by each brand, as these guidelines may vary between different manufacturers.